

Stage 1

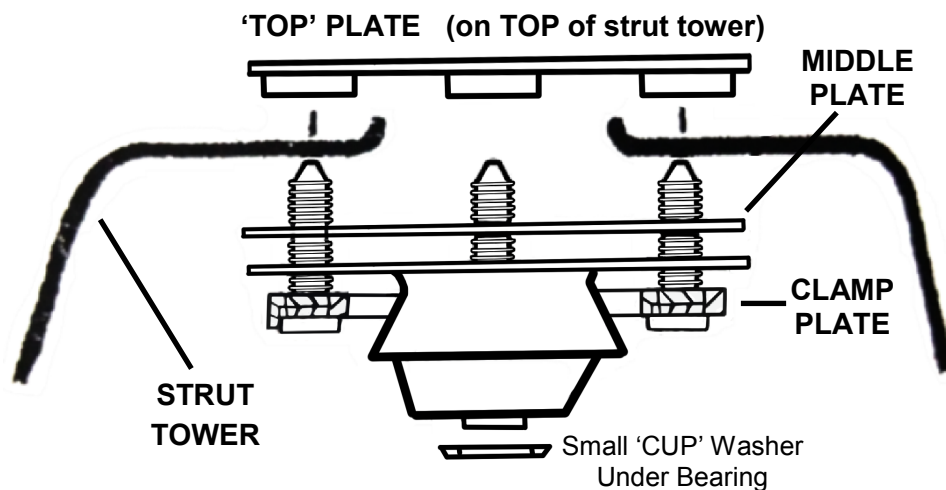
**H/DUTY BALL RACE THRUST BEARINGS
& Elastomer Centers (STREET)**

STREET CAMBER & CASTER Adjustment For The 1st. Time

✓ Can fit (and) adjust with strut brace

Also MANF. **STAGE 2** (STREET/RACE) and **STAGE 3** (FULL RACE) KITS
Setting New Standards - Biggest (and Quickest) adjustment
Unique KMAC patented design. (See Website)

Kits designed to simply replace
original strut 'upper' mounts, no mods
(All items above Coil spring except for OEM dust cover)

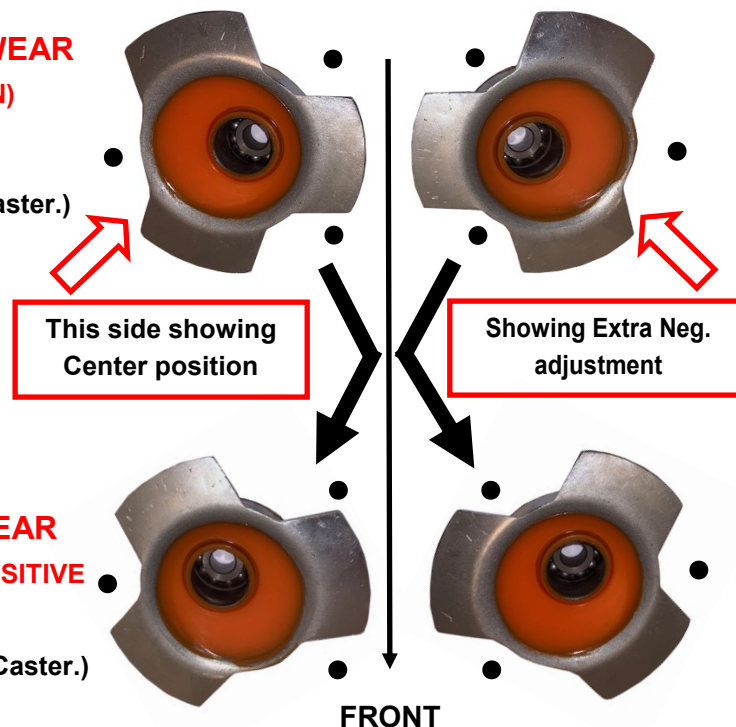


Refer manufacturers workshop manual re removal and installation
Observe all safety procedures

INITIALLY SIT KMAC ADJUSTERS ON TOP OF STRUT TOWERS. . .

Kit (Centers) are 'Left' and 'Right' hand offsets
THEREFORE BEFORE INSTALLING / ADJUSTING
(Select Center hole position that will achieve best results!)

**A. IF OUTER TIRE WEAR
OR (RACE/COMPETITION)
MOUNT POSITION FOR
NEGATIVE (-) CAMBER**
(And to REAR for Pos. Caster.)



**B. IF INNER TIRE WEAR
MOUNT POSITION POSITIVE
(+) CAMBER**
(And to REAR for Pos. Caster.)

ALIGNING KMAC Patented design allows adjustment to be carried out accurately (under load). No need to jack vehicle.

- A.** From engine bay, loosen the '3' top nuts for strut tower upper mount.
- B.** Use large screwdriver to lever / ratchet KMAC adjuster mount crossways for CAMBER, then lengthways for required CASTER.
- C.** Once optimum settings, tighten the 'TOP' KMAC NUTS to **27Nm (20ft/lbs)**.



FRONT #193316-1J STAGE 1 (STREET)

**BMW E30, 34 (5/25 9/92-96, 5/8-5/24 7/90-96),
E28 (82-88), E24 (5/82-89) Incl 'M'**

FRONT CAMBER (and CASTER) FOR THE 1st TIME
(and accurate-underload direct on alignment rack)

- ✓ **Quickest Adjustment** - Change Camber & Caster settings - from engine bay and with strut brace fitted
- ✓ **Centers H/Duty** - Ball Race (Thrust Bearings for steering loads with elastomer for extended wear life)

ALSO MANUFACTURED
STAGE 2 (STREET / RACE), STAGE 3 (FULL RACE).
SEE WEB SITE

- **FRONT** - Also lower inner arm 'extra' Camber & Caster performance bushings
- Mono ball / 2-axis design lower arm rear mono ball bushes - also available in "offset" for extra positive Caster.

Always 1st With The Latest Design Breakthroughs

- 1. WISHBONE:** Precise Ball Joint Adjustment System.
 - 2. STRUT(top):** Biggest/Quickest Adjustment System.
 - 3. BUSHINGS:** Single Wrench - Precise On Car Adjustment.
- Including unique KMAC "non-slip" lock system!**

Actual Inventors/Patentee's - The '3' Basic Suspension Systems

We do appreciate any ideas to further improve our market leadership !