

**NOW CAN
ADJUST TIRE
'CONTACT'
ANGLES**

FINALLY FRONT & REAR ONGOING

IMPROVE TRACTION & EDGE TIRE WEAR
Camber, Caster Adjustment
AUDI TO VOLVO - Including Mercedes 'AMG', BMW 'M'

REAR CAMBER (& EXTRA TOE) #502326-1K

**AMG W205 C63 'S' (Coupe),
AMG W213 E53, E63/S, C253 GLC 63/S**

KMAC "Precisely Adjustable" - providing '4' times the adjustment range of "one offset" plates
Single Wrench - "accurately" under load

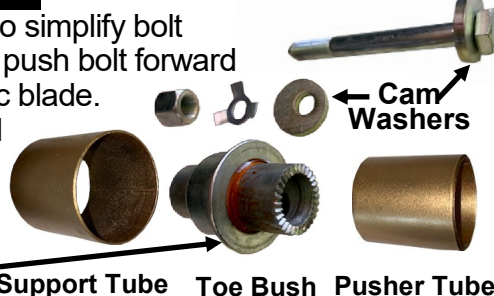
KMAC BUSHES - ALSO HAVING 2½ TIMES THE LOAD BEARING AREA
TOOLS REQUIRED

WRENCH: 2 x 18mm, 2 x 16mm MULTI GRIPS: 1
SOCKET: 1 x 18mm E, 1 x 18mm (Ext.), 1 x 12mm (Multi Spline)

Installation should be carried out by a qualified person

- A.** Vehicle on 4 post hoist to aid reconnection of inner bolts step K.
- B. EXTRA TOE - UNBOLT ARMS** Located FRONT of subframe.

OEM "inner bolt heads" are to front. To simplify bolt removal (fuel tank side) undo nut and push bolt forward so clearance to cut head off using disc blade. After arm removal use bench vice and the '2' small tubes supplied to press out the inner adjustable Toe bush on each side. Press in the new KMAC bushes. (till "EVENLY" centered)



Cam Washers
Support Tube Toe Bush Pusher Tube

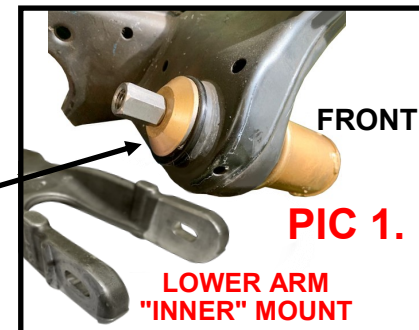
- C.** Reconnect Toe arms (KMAC bolt head to Rear) with cam washers supplied and 'tab' lock washers under each nut

D. CAMBER - LOWER ARMS INNER BUSHES

As indicated in Pic. 2 the lower control arm forks each have jacking lug located near to "inner" slot. Important jack positioned "so clearance" - to fully insert (#1) slide plates.

- E.** For ease of bolt removal - jack / raise arm only sufficient to take up / support load. Make sure load is "EVEN" on both forks (for ease of bolt removal).
- F.** Remove the inner bolt initially quarter way and again re-adjust jack - (if not easy to tap out) - bolt head should be horizontal.

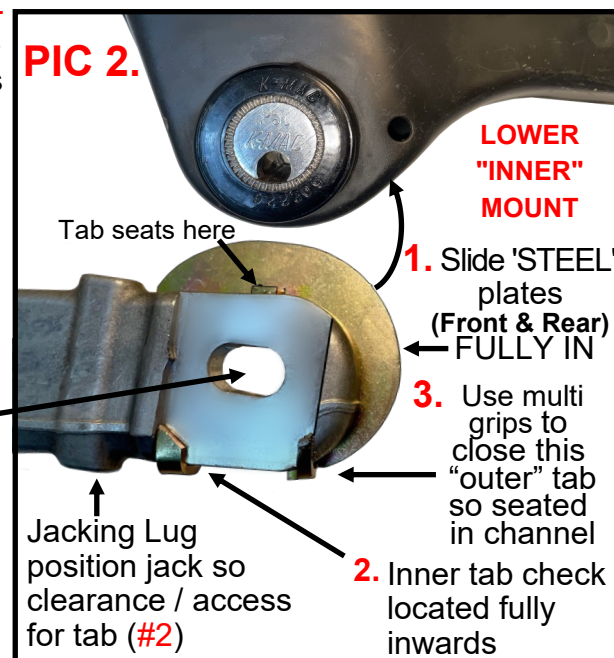
- F.** After bolt removal slowly lower jack - sufficient only for end of arm to expose the bush in frame. Then install the KMAC threaded rod tool from FRONT (as in Pic) and large washer on REAR to extract bush (18mm ext. socket can be tight - use impact wrench if available).



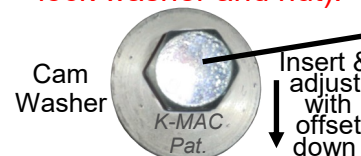
- G.** Clean hole and insert the new KMAC elastomer bushes. Now lubricate the steel inner bushes (only) with silicone grease supplied and insert.

- H.** For ease of "bolt entry" rotate bush 'D' holes to 6 o'clock position. (Flat then is to bottom).

- I.** Position each pair of the STEEL folded tab plates as in pic 2 (#1). Then use multi grips to close the outer tab so seated in channel (#3).



- J.** New cam washers place under head of bolt (then prior to tab lock washer and nut).



- K.** Raise and reconnect arms (insert bolt with flat at bottom so lines up with 'D' hole flat)

#502326-1K

© KMAC Align 2023

WHEEL ALIGNMENT ("WITH TIRES ON SLIDE PLATES")

SIMPLY ROTATE BOLT HEADS - UNIQUE KMAC PATENTED SYSTEM
(allowing accurate adjustment "under load")

Make sure nuts are loose and rotate the bolt heads for both Camber and Toe. Once required settings obtained, hold head of bolts in this position and tighten the nuts to **110Nm (80 ft/lbs)**.

Then fold one of the 3 lock Tabs that lines up with the side of a nut

ESSENTIAL RECHECK MAKE SURE 4 NUTS ARE FULLY TIGHT

(Loose Nuts Cause Noise Noticeable Camber Change)

CHASSIS QUICK REFERENCE ALL '68-'23 Incl. AMG, Black Series

FINALLY - ON GOING / PRECISE ADJUSTMENT Resolve Steering Pull, Premature Edge Tire Wear

PAGE	FRONT (CAMBER & CASTER)	REAR	Part #	Notes
8	'10-'18 W212, E200 - 550, E63, E65/S AMG '10-'18 W212, C218 4MATIC ● Also Adjustable Strut Top Mounts - If Coil Spring Suspension	C218 CLS 250 - 550, 63, 65 AMG	#502916 K #503616 K #502916-2L #502916-3L	● "EXTRA" Performance driving / Track days STRUT TOPS. see below ADJUST (Front Upper 'A' Arms. - Page 7-11)
7	'15-'23 W205 / A / C / S, **C180, C200, C220, C250, C300, C350 4MATIC. **C300, C400, C450 / C43 AMG C63/A/C, 63S AMG	{ AMG GT4 Door } { ALL 43 to 63/S }	#502816 K #503416 K #503316 K	
7	'16-'23 **EQC/E/S W213 E43/53/63, E220-450. **C253/X GLC, AMG / 4MATIC '13-'23 **W213 E200-350. **C238, **C217, W222 / 223 / S, S63 / 65 AMG. Maybach ('15-'20)		#503416 K #502816 K	
7	'02-'20 R172, W204, C207, AMG, 'Black' (C209 AMG, Black #503516K, 270 - 500 #502216K) ● Also Adjustable Strut Top Mounts - for C209 'Black' Series (only)	Stage 2 (Street/Race) Stage 3 (Full Race)	#502616 K #502616-2 L #502616-3 L	
9	'02-'20 W203/A, W211, C209 (CLK 270 - 500), C219, R171, R230, R231		#502216 K	
9	'93-'10 R170, W202, C208 / A (CLK 56 AMG #502016-2K) incl. Chrysler Crossfire		#502016 J	
9	'96-'09 W210 (502116K) "4MATIC" - W210, W211/S, W220		#502416 K	
9	'06-'14 W216, W221		#502316 K	
9	'00-'06 W215 CL, W220/S		#502516 K	
9	'91-'99 W140, Maybach ('97-'12) Have adjustment KMAC doubles adj. range		#501916 K	
10	'82-'01 W124, R129, W201 Have adjustment KMAC doubles adj. range ● Also (124, 129) Adjustable Strut Top Mounts (#501716-2 L, #501716-3 L)		#501716 J	
10	'77-'91 W123, W126 Camber only Have adjustment KMAC doubles adj. range		#501616 H	
REAR (CAMBER & Extra TOE) ● Updated Bushings 6 Multi link rear arms Page 14 ● Upper Camber arms (and extra Toe) Page 12-14				
12	'14-'23 Coil Susp. W205 (incl. AMG E43 *C63/S) W213, 253 (#502226K) Air/4MATIC/E		#502326 K	
12	'14-'23 W205 *C63/S Coupe (#502326-1K). Above AMG models * & GT 4		#502326-2K	
12	'00-'18 W204 incl. AMG, Black Series, C207, W212, W215, C218, R231		#502126 K	
12	'01-'11 W211, C219, R230 Airmatic / 4matic incl. AMG #502526K. W211, C219, R230 (Coil Susp)		#502126-1 K	
12	'06-'20 W216, 221, 222, C217, C238, C257 (Maybach 15-20)		#502626 K	
12	'01-'20 C209 / A ('01-5/04), R171, R172 (33mm Lower Arm/Inner bush)		#502026 H	
12	6/04-09 C209 / A (Black Series 501526J) (51mm " " " ")		#501926 K	
13	'91-'06 W140, W220 (Maybach '02-'12 #501726K) (51mm " " " ")		#501626 K	
13	'82-'10 W124/C, R129, R170, W201, W202, *C208, W210, Chrysler Crossfire (300C, Charger #502726 K) *A208 Convertible		#502026 H #501426 i	
13	'04-'07 W203 (from A555897, F457375, R131145) (51mm Lower Arm/Inner bush)		#501926 J	
13	'00-'04 W203 (33mm " " " ")		#502026 H	
14	'68-'91 R107, W114, W115, W116, W123, W126		#501826 J	
SUV, SPRINTER, VITO, A/B/CLA/GLA AMG				
SUV	**W167 / X, V167 GLE/GLS, C293 Upper Inner Bushes **W166 / X, C292 Front also replaces / strengthens the (costly) Lower / Inner Rear bushes! **W164 / X, ML W251 W163 (Camber only)	11 #504216 P #504016 N #503816 N #503916 G	14 #504226 N #504026 K #504026 K 15 #503926 i	REAR Bushings and / or Upper Arms (Page 14)
Sprinter	W910 ('19-'23) incl. 'E' Strut Mounts Camber & Caster W906 Camber & Caster '4' lower arm bushes) W903 ('96-'14) Camber & Caster '4' lower arm bushes)	11 #505816 L #505716 K #505616 K		Also see Page 11 (Front Camber ONLY)
Vito	447, 448 ('14-'23) incl. 'E' Strut Mounts Camber & Caster	#506016 L	14 #505226 K	
Metris	W639 ('03-'14) Lower arm bushes only	11 #505116 K	#505126 K	
Valente	W638 ('96-'03) Front Camber only (See page 11)	#120216 D	#505126 K	
2018-2023	W177/A 35/45/S, C118 CLA, 247B/X GLA STRUT TOPS (Precise Camber & Caster) STAGE 2 (STREET/RACE) STAGE 3 (FULL RACE)	12 #506216-2 L #506216-3 L		
2012-2020	W176/A45, C117 CLA, B246, X156 GLA STRUT TOPS (Precise Camber & Caster) STAGE 2 (STREET/RACE) STAGE 3 (FULL RACE)	8 #506116-2 L #506116-3 L #506116-4 K		
Extra Camber & Caster (Race days) lower arm (inners) '98-'20 Front Camber Only (See Page 11)		11 #120216 D	14	
REAR ('13-'20) lower arm Camber (& extra Toe) bushes. Trail Arm front bushes - Contain side load / G Forces Updated bushes (8) - With above kits eliminates rear end flex.			#506126 K #506128 K #506128-1J	Have Rear Toe. KMAC provides also Camber & doubles Toe adjustment range.



Mercedes - REAR "Camber & Extra Toe"
#502326-1K
AMG W205 C63 'S' (Coupe),
AMG W213 E53, E63/S, C253 GLC 63/S
FORGED ALLOY LOWER ARMS (with inner slot)
FRONT - CAMBER & CASTER KITS ALSO MANUFACTURED
 ● Lower inner adjustable bushings (up to 2" Pos. or Neg.)
 ● Also upper inner wishbone bushings up to (1.5" Pos. or Neg.)

A REVOLUTION IN SIMPLIFIED ADJUSTMENT
 BUSH ROTATES INSIDE (stationary) OUTER SLEEVE means unlike other brands bushes can be inserted in any position! (not just one offset position of adjustment) allowing therefore precise change of adjustment. SIMPLY BY ROTATING BOLT HEADS.
KMAC UNIQUE PATENTED INTERLOCKING BOLT / BUSH DESIGN

Providing '4' times adjustment range of "one offset" plates Also single Wrench - "accurately" under load DIRECT ON ALIGNMENT RACK

* KMAC are designed to adjust lower arms (unlike upper Camber arms) retaining clearance top of tire to outer fender when wanting to reduce inner edge tire wear. Essential if wide profile tires / wheels fitted. Also KMAC kits include extra Toe adjustment to compensate for

NOTE: KMAC UPPER ADJUSTABLE ARMS #502226-3M - Recommend only if wanting to increase Negative Camber / Clearance top of tire to outer fender.